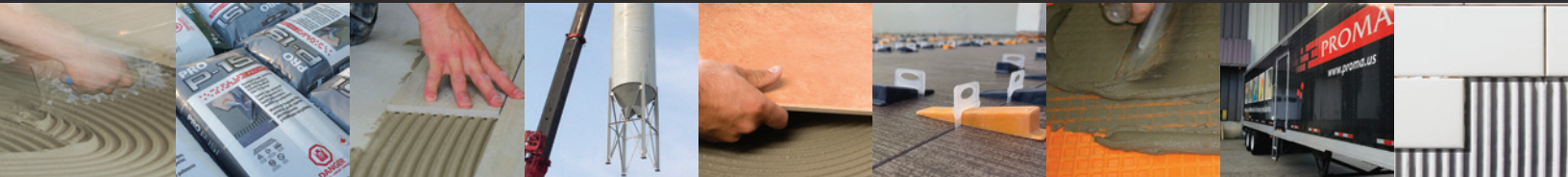




PROMA



**PROFESSIONAL
MATERIALS FOR
FLOORING
INSTALLATION**

**SETTING
MATERIALS**

DISCOVER THE DIFFERENCE

At PROMA, we conduct business with a goal in mind: **'Always offer the best products, services, and value.'** It's at the heart of everything we do, from product development to customer service, and everything in between. When you take all of what PROMA has to offer and add to that competitive pricing and unmatched dependability, you receive one of the best values available for flooring installation.

INNOVATIVE SOLUTIONS

Always proactive, always listening, always moving forward. PROMA's research and development team works closely with our customers and with the world's top raw materials suppliers. This synergy allows PROMA to develop new and innovative products that excel beyond current industry standards and enables us to bring tomorrow's technology to today's products.

SUPERIOR QUALITY

PROMA offers one of the broadest array of products available so you can choose the right solution for any given job. Our products have been engineered to provide user-friendly, time-saving jobsite characteristics and exceptional, long-lasting performance through strength, flexibility and durability.

ECOLOGICAL AND RESPONSIBLE

Many of PROMA's products have been formulated to have minimal impact on the environment, are safe to apply, and do not contribute to unfavorable jobsite conditions or adversely affect indoor air quality. Some also help contribute valuable points to LEED® certification, the accepted standard for Green Building in the construction industry.

PERSONAL SERVICE

We understand that just offering great products is not nearly enough. You need a partner that will stand by you, before, during, and after the sale to help you achieve success. A partner with an experienced technical support team that helps every project go smoothly. A partner who will help protect your good reputation by offering the quality, personal service and support you and your customers need. PROMA is that partner.







Products with this logo contain a high percentage of recycled content providing a more ecological and sustainable solution to traditional products.



Products with this logo are designed for a safer jobsite environment by being free of solvents, nonflammable, low-odor, and low in TVOCs.



Products with this logo have characteristics that improve indoor air quality compared to Portland cement-based products.



This logo is specific for cleaners and sealers that are designed with a multitude of environmentally-friendly characteristics relating to application and use.



Products with this logo are scratch-free and free of the environmental and health risks of crystalline silica.

ECOLOGICAL, RESPONSIBLE

PROMA is committed to ecological/responsible operations and products that are considerate of natural resources, respectful of the environment, and contribute to a more sustainable future in the flooring industry, our community, and the world.

ECO-FRIENDLY INGREDIENTS

PROMA formulates products using advanced ingredients that are safe to use with minimal impact on the environment, while maintaining premium performance standards. Certain products even contain recycled materials, which helps reduce pollution and greenhouse gas emissions, and conserve natural resources.

SUSTAINABLE PACKAGING

PROMA is transitioning all powdered products to 100%-recyclable plastic packaging. Our pioneering plastic technology uses less material than traditional packaging, vacuum-seals products to the smallest size possible for greener transport, and eliminates waste from seepage. The 100% recyclability of the plastic also lessens the need for new raw materials and reduces waste in landfills and the environment.

SAFER CONDITIONS

PROMA products have been carefully designed to be safer for the applicator and building owner. We use nontoxic ingredients whenever possible, without compromising quality, in order to be less harmful, improve indoor air quality and protect the environment.

LEED® CONTRIBUTION

Certain PROMA products and their multiple use characteristics, recycled content and low-VOC emissions can contribute toward attaining credit requirements within the LEED® (Leadership in Environmental and Energy Design) USGBC-NC and Canada-NC Rating Systems. Products have achieved independent validation by the renowned environmental auditor Vertima™ (vertima.ca); letters of credit conformity can be provided upon request.





ADVANCED TECHNOLOGIES

PROMA offers new and innovative technologies that excel beyond current industry standards enabling us to bring tomorrow's technology to today's products.



SUPER SETTING TECHNOLOGY™ offers advanced application characteristics, including extended open time, ultra-creamy consistency and exceptional mortar transfer.



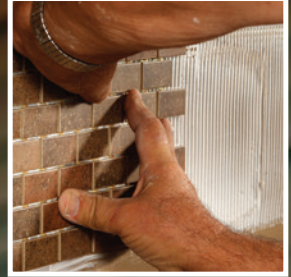
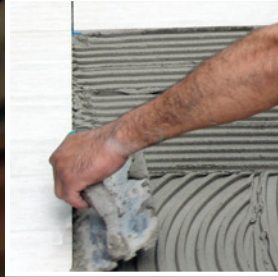
LIGHTWEIGHT TECHNOLOGY™ products contain lightweight ingredients, such as glass aggregates, to provide unmatched non-sag and non-slump performance as well as being incredibly easy to mix and apply.



FUSION TECHNOLOGY™ blends multiple key characteristics for the benefit of the end-user, including being stain-resistant, scratch-free and sag-free with exceptional color consistency and ease-of-maintenance.



RAPID CURE products provide high early strength, and dramatically reduced waiting time for maximum productivity.





PREMIUM MORTAR SYSTEMS
POLYMER-MODIFIED MORTARS
DRY-SET MORTARS
SPECIALTY
ADHESIVES (MASTICS)



PRO BOND™ PLUS SYSTEM

The PRO BOND™ PLUS SYSTEM is a **premium-quality**, high-performance solution for installations requiring extreme bond strength and flexibility. Interior or exterior, freeze/thaw, high-traffic, water-submerged... nearly any environment is suitable for the PRO BOND PLUS SYSTEM. Install tile or stone of almost any type or size over the widest range of substrates.

Strong, yet extremely flexible, the PRO BOND PLUS SYSTEM is a great solution for the toughest installations. When in doubt? You can't go wrong with the PRO BOND PLUS SYSTEM.

The PRO BOND PLUS SYSTEM is PRO BOND (powder) + PRO BOND PLUS (additive).

- Use for the most demanding installations such as pools, shopping malls, airports, etc.
- Use for the installation of most types and sizes of tile and stone
- Use over the widest range of suitable substrates
- Qualifies as part of PROMA's LIMITED WARRANTY PROGRAM up to a LIFETIME (contact PROMA for details)
- For INTERIOR, EXTERIOR and SUBMERGED applications
- For use over a radiant floor heating system
- Exceeds ANSI A118.4 and ANSI A118.11 requirements
- Contributes to LEED® objectives and requirements



Packaging Product Code

PRO BOND™	
22.7 kg (50 lb) plastic bag, grey	01122
22.7 kg (50 lb) plastic bag, white	01222
PRO BOND™ PLUS	
7.5 L (2 US gal) pail	20075
20 L (5.3 US gal) pail	20020



PRO QUICK™ PLUS SYSTEM

The PRO QUICK™ PLUS SYSTEM is a **premium-quality, fast-setting** high-performance installation solution for the most demanding installations. Fast-track, interior or exterior, freeze/ thaw, high-traffic, water-submerged... nearly any environment is suitable for the PRO QUICK PLUS SYSTEM. Install tile or stone of almost any type or size over the widest range of substrates – fast!

Strong, yet flexible, the PRO QUICK PLUS SYSTEM sets the standard by which all other setting materials are measured.

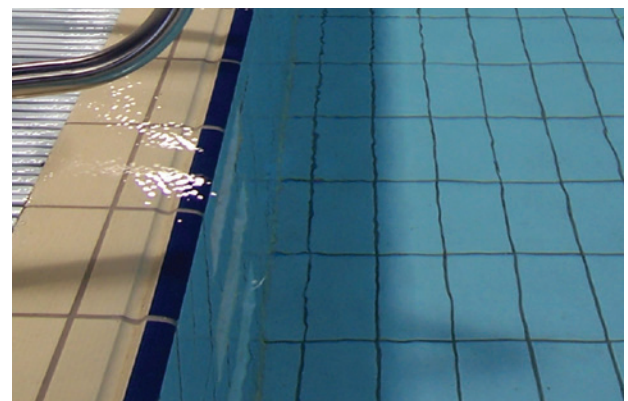
The PRO QUICK™ PLUS SYSTEM is PRO QUICK™ SET (powder) + PRO QUICK™ PLUS (additive).

- Use for the most demanding installations such as pools, shopping malls, airports, etc.
- **FAST-SETTING:** grout within 3–4 hours; permits light foot traffic after 4–6 hours following installation
- **Combine with other PROMA products with Rapid-Cure Technology™ for the most time-critical installations**
- Use for the installation of most types and sizes of tile and stone
- For installing interior/exterior brick veneer
- Use over the widest range of suitable substrates
- Qualifies as part of PROMA's LIMITED WARRANTY PROGRAM up to a LIFETIME (contact PROMA for details)
- For INTERIOR, EXTERIOR and SUBMERGED applications
- For use over a radiant floor heating system
- Exceeds ANSI A118.4F, ANSI A118.11 and ANSI A118.15F requirements
- Contributes to LEED® objectives and requirements



Packaging Product Code

PRO QUICK™ SET	
22.7 kg (50 lb) plastic bag, grey	02822
11.34 kg (25 lb) plastic bag, grey	02811
22.7 kg (50 lb) bag, white	02823
PRO QUICK™ PLUS	
7.5 L (2 US gal) pail	22075





PRO HPX®

PRO HPX® is a revolutionary **premium-grade, extreme-performance**, flexible, anti-fracture, slump resistant, polymer-modified mortar that gives you the power of a two-part system in a one-part product. PRO HPX is the only polymer-modified mortar that can truly replace expensive two-part systems for installations requiring extreme bond strength and flexibility; interior, exterior, freeze/thaw and heavy-traffic durability; water-submerged performance . . . nearly any environment is suitable for PRO HPX! Install tile or stone of almost any type or size over the widest range of substrates bridging cracks in plane up to 1/4" (6 mm). **Strong, yet extremely flexible, PRO HPX is the only polymer-modified mortar for the toughest installations, even gaining strength over time when submerged under water!**

- Use for the most demanding installations such as pools, shopping malls, airports, etc.
- Use for the installation of most types and sizes of tile and stone
- For installing interior/exterior brick veneer
- Use over the widest range of suitable substrates
- Qualifies as part of PROMA's LIMITED WARRANTY PROGRAM up to a LIFETIME (contact PROMA for details)
- For INTERIOR, EXTERIOR and SUBMERGED applications
- For use over a radiant floor heating system
- Exceeds ANSI A118.4E, ANSI A118.11 and ANSI A118.15E requirements
- Contributes to LEED® objectives and requirements



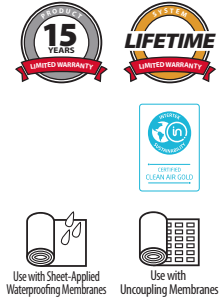
Packaging	Product Code
22.7 kg (50 lb) plastic bag, grey	07622
22.7 kg (50 lb) plastic bag, white	07722
4.54 kg (10 lb) box, white	07705



PRO P-151™

PRO P-151™ is a **premium-grade**, high-performance, universal single-component polymer-modified thin-set mortar designed to obtain high-bond strengths to conventional and non-conventional substrates.

- One of the industry's most popular tile mortars
- Use for the installation of most types of tile and stone
- For INTERIOR and EXTERIOR installations
- Ideal for use with uncoupling membranes and sheet-applied waterproofing membranes
- Qualifies as part of PROMA's LIMITED WARRANTY PROGRAM up to a LIFETIME (contact PROMA for details)
- Meets or exceeds ANSI A118.4E and ANSI A118.11 requirements
- Contributes to LEED® objectives and requirements



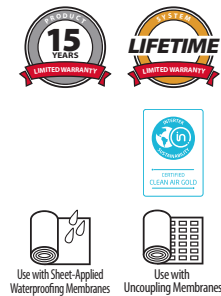
Packaging	Product Code
22.7 kg (50 lb) plastic bag, grey	02422
11.34 (25 lb) plastic bag, grey	02411
22.7 kg (50 lb) plastic bag, white	02522



PRO P-151™ SF

PRO P-151 SF™ is a **premium-grade**, high-performance, universal single-component, specially formulated polymer-modified **sag-slump resistant** thin-set mortar designed for floor and wall installation of large-format and heavy tile and stone.

- Use for the installation of most types of tile and stone including large-format and heavy tile and stone
- **Sag-slump resistant**
- For INTERIOR and EXTERIOR installations
- Ideal for use with uncoupling membranes and sheet-applied waterproofing membranes
- Qualifies as part of PROMA's LIMITED WARRANTY PROGRAM up to a LIFETIME (contact PROMA for details)
- Meets or exceeds ANSI A118.4 E and ANSI A118.11 requirements
- Contributes to LEED® objectives and requirements



Packaging	Product Code
22.7 kg (50 lb) plastic bag, grey	02424
22.7 kg (50 lb) plastic bag, white	02425



PRO P-151™ RAPID

PRO P-151™ RAPID is a **premium-grade, fast-setting**, high-performance, universal single-component, polymer-modified, thin-set mortar designed to obtain high-bond strengths to conventional and non-conventional substrates.

- **FAST-SETTING:** grout within 2–3 hours; permits light foot traffic after 4–6 hours following installation
- **Combine with other PROMA products with Rapid-Cure Technology™ for the most time-critical installations**
- Use for the installation of most types of tile and stone
- For INTERIOR and EXTERIOR installations
- Ideal for use with uncoupling membranes and sheet-applied waterproofing membranes
- Qualifies as part of PROMA's LIMITED WARRANTY PROGRAM up to a LIFETIME (contact PROMA for details)
- Meets or exceeds ANSI A118.4 F, ANSI A118.11 and ANSI A118.15 F requirements
- Contributes to LEED® objectives and requirements



Packaging	Product Code
22.7 kg (50 lb) plastic bag, grey	02622

PRO QUICK™ SET

PRO QUICK™ SET is a **fast-setting**, single-component, polymer-modified thin-set mortar.

- **FAST-SETTING:** grout within 2–3 hours; permits light foot traffic after 4–6 hours following installation
- **Combine with other PROMA products with Rapid-Cure Technology™ for the most time-critical installations**
- Use for the installation of most types of tile and stone
- For INTERIOR and EXTERIOR installations
- Qualifies as part of PROMA's LIMITED WARRANTY PROGRAM up to a LIFETIME when mixed with PRO QUICK™ PLUS (contact PROMA for details)
- Meets or exceeds ANSI A118.4 F and ANSI A118.11 requirements
- Contributes to LEED® objectives and requirements



Packaging	Product Code
22.7 kg (50 lb) plastic bag, grey	02822
11.34 (25 lb) plastic bag, grey	02811
22.7 kg (50 lb) bag, white	02823

NEW!

PRO COMPLETE™ SET eco

PRO COMPLETE™ SET ECO is an **ECOLOGICAL, 100% silica sand-free, universal, sag-slump resistant, lightweight**, highly polymer-modified and ultra-creamy thin-set mortar for institutional, commercial and residential installations of non-vitreous, semi-vitreous, vitreous and impervious tiles, including porcelain, most natural stone and large-format and heavy tile and stone. PRO COMPLETE™ SET ECO contains lightweight recycled glass aggregates in place of silica sand to provide a **safer, ecological and more sustainable solution** to traditional thin-set mortars, while offering exceptional versatility and performance, outstanding sag-slump resistance, and super-creamy and easy application characteristics.



- **100% silica sand-free – safer for users and the environment**
- **Contains over 50% recycled content – a more ecological and sustainable solution to traditional thin-set mortars**
- **Lightweight – easier to carry and transport**
- **Ideal for use with leveling clips and lippage control systems, providing easy adjustability**
- Super creamy and easy to apply
- Extended open time
- Exceptional contact with tile and substrate
- For sag-slump resistant wall, floor and countertop installations of large-format and heavy tile and stone, with or without leveling clips and lippage control systems
- For setting non-vitreous, semi-vitreous, vitreous and impervious ceramic and porcelain tiles, mosaics, pavers and quarry tiles
- For setting most marble, granite and natural stone
- Ideal for setting EXTRA-LARGE / EXTRA-THIN units (above 24" x 24" [60 x 60 cm] and less than 3/16" [5 mm] thickness)
- Ideal for use with uncoupling membranes and sheet-applied waterproofing membranes
- Qualifies as part of PROMA's LIMITED WARRANTY PROGRAM up to a LIFETIME (contact PROMA for details)
- For INTERIOR institutional, commercial and residential floor and wall applications
- Meets or exceeds ANSI A118.4, ANSI A118.4 E, ANSI A118.4 T and ANSI A118.11 requirements
- Contains Recycled Materials (51% Post-Consumer) – Exceeds LEED® and WELL® objectives and requirements

Packaging	Product Code
20.4 kg (45 lb) plastic bag, grey	03020
20.4 kg (45 lb) plastic bag, white	03021





PRO SUPERLITE™ MORTAR

PRO SUPERLITE™ MORTAR is a **super-light-weight**, polymer-modified, single-component thin-set mortar with **exceptional sag-slump resistance** for high-performance installations of large-format and heavy tile and stone.

- Contains Recycled Materials (20% Post-Consumer)
- Super lightweight – 11.34 kg (25 lb) bag offers the SAME COVERAGE as a 22.7 kg (50 lb) bag of conventional thin-set mortar, allowing for much easier carrying and transport!
- Incredible creamy-smooth handling that dramatically increases job site efficiency
- Silica sand free
- Use for high-performance, **sag-slump resistant** installations of large-format and heavy tile and stone
- For INTERIOR installations only
- Ideal for shower walls, bath surrounds and backsplash tile installation where mastics are commonly used
- True white formula – use for stain-free installation of light-colored and translucent marble and most types of dimension stones
- For installing interior brick veneer
- Meets or exceeds ANSI A118.4T and ANSI A118.11 requirements for shear bond strength
- Exceeds LEED® objectives and requirements



Packaging	Product Code
11.34 (25 lb) plastic bag, TRUE WHITE	03011



PRO FLEX® LFT

PRO FLEX® LFT is a **professional grade**, polymer-modified **sag-slump resistant** thin-set mortar designed for floor and wall installation of large-format and heavy tile and stone that contains **Super Setting Technology™**.

- **Sag-slump resistant**
- Contains **Super Setting Technology™**, which offers **extended open time, ultra-creamy consistency and exceptional mortar transfer**
- Use for the installation of most types of tile and stone including large-format and heavy tile and stone
- Ideal for use with uncoupling membranes and sheet-applied waterproofing membranes
- For INTERIOR and EXTERIOR installations
- Meets or exceeds ANSI A118.4T, ANSI A118.4E and ANSI A118.11 requirements
- Contributes to LEED® objectives and requirements



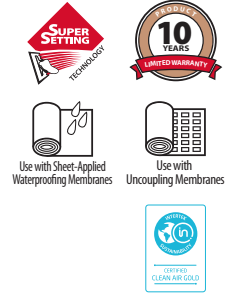
Packaging	Product Code
22.7 kg (50 lb) plastic bag, grey	01422



PRO FLEX® SELECT

PRO FLEX® SELECT is a **professional-grade**, polymer-modified, single-component, tile and stone setting mortar with **Super Setting Technology™**.

- Contains **Super Setting Technology™**, which offers **extended open time, ultra-creamy consistency and exceptional mortar transfer**
- Use for the installation of most types of tile and stone
- Ideal for use with uncoupling membranes and sheet-applied waterproofing membranes
- For INTERIOR and EXTERIOR installations
- Meets or exceeds ANSI A118.4E and ANSI A118.11 requirements
- Contributes to LEED® objectives and requirements



Packaging	Product Code
22.7 kg (50 lb) plastic bag, grey	02922
22.7 kg (50 lb) plastic bag, white	02923



PRO FLEX® SF

PRO FLEX SF® is a **mid-grade**, polymer-modified, specially formulated **sag-slump resistant** thin-set mortar designed for floor and wall installation of large-format and heavy tile and stone.

- **Sag-slump resistant**
- Use for the installation of most types of tile and stone including **large-format and heavy tile and stone**
- Ideal for use with uncoupling membranes and sheet-applied waterproofing membranes
- For INTERIOR and EXTERIOR installations
- Meets or exceeds ANSI A118.4T, ANSI A118.4E and ANSI A118.11 requirements
- Contributes to LEED® objectives and requirements



Packaging	Product Code
22.7 kg (50 lb) plastic bag, grey	01322
22.7 kg (50 lb) plastic bag, white	01323



PRO FLEX®

PRO FLEX® is an excellent **mid-grade**, single-component, polymer-modified thin-set mortar.

- Use for the installation of most types of tile and stone
- Ideal for use with uncoupling membranes and sheet-applied waterproofing membranes
- For INTERIOR and EXTERIOR installations
- Meets or exceeds ANSI A118.4E and ANSI A118.11 requirements
- Contributes to LEED® objectives and requirements



Packaging	Product Code
22.7 kg (50 lb) plastic bag, grey	02122
11.34 (25 lb) plastic bag, grey	02111
4.54 kg (10 lb) box, grey	02105

PRO BOND™

PRO BOND™ is a high-quality dry thin-set mortar. **Mix PRO BOND™ with undiluted PRO BOND™ PLUS for interior and exterior bonding of porcelain, glass tile, most marble and granite over conventional and non-conventional substrates.**



- Use for the installation of tile and stone
- Use for the installation of porcelain tile when installed with an uncoupling or sheet-applied waterproofing membrane (where a non-modified dry-set mortar is required by membrane manufacture)
- Qualifies as part of PROMA's LIMITED WARRANTY PROGRAM up to a LIFETIME when mixed with PRO BOND™ PLUS (contact PROMA for details)
- For INTERIOR installations only
- Meets or exceeds ANSI A118.1 requirements
- Contributes to LEED® objectives and requirements



Packaging	Product Code
22.7 kg (50 lb) plastic bag, grey	01122
22.7 kg (50 lb) plastic bag, white	01222

PRO FLEX® SET

PRO FLEX® SET is a **standard-grade**, ultra-creamy, polymer-modified, single-component, sag-slump resistant thin-set mortar.

- **Sag and slump resistance properties**
- Use for the installation of most types of tile and stone including **large-format and heavy tile and stone**
- Ideal for use with uncoupling membranes and sheet-applied waterproofing membranes
- For INTERIOR and EXTERIOR installations
- Meets or exceeds ANSI A118.4E and ANSI A118.11 requirements
- Contributes to LEED® objectives and requirements



Packaging	Product Code
22.7 kg (50 lb) plastic bag, grey	02022





PRO MASTIC™ 2000

PRO MASTIC™ 2000 is a **premium-grade**, low VOC, non-flammable, **sag-free**, extremely creamy and 'true white' latex-based adhesive.

- Use to install ceramic tiles up to 30 x 30 cm (12" x 12") on walls **WITHOUT SAG**, and up to 15 x 15 cm (6" x 6") on floors
- Excellent adhesive transfer to tile
- Excellent resistance to prolonged water exposure once cured
- Will not promote mold, mildew or bacteria growth
- Very low odor
- Low VOC
- For INTERIOR light-commercial and residential wall and floor applications
- Freeze/thaw stable
- Exceeds ANSI A136.1, Type 1 requirements
- Contributes to LEED® objectives and requirements



Packaging	Product Code
946 mL (1 US qt) pail	31106
3.79 L (1 US gal) pail	31109
13.25 L (3.5 US gal) pail	31133



PRO MASTIC™ 1000

PRO MASTIC™ 1000 is a **professional-grade**, non-flammable, **sag-free**, latex-based adhesive.

- Use to install ceramic tiles up to 30 x 30 cm (12" x 12") on walls **WITHOUT SAG**, and up to 15 x 15 cm (6" x 6") on floors
- Good resistance to prolonged water exposure once cured
- Will not promote mold, mildew or bacteria growth
- For INTERIOR residential wall and floor applications
- Freeze/thaw stable
- Meets ANSI A136.1, Type 1 requirements
- Contributes to LEED® objectives and requirements



Packaging	Product Code
13.25 L (3.5 US gal) pail	30013



PRO SEAL & SET™ 100 NS

PRO SEAL & SET™ 100 NS is a **high-performance**, solvent-free, two-component **reactive adhesive**.

- Use as an **INDUSTRIAL-STRENGTH ADHESIVE** for most tile and stone and moisture sensitive stones such as green or red marbles
- High bond strength and extreme flexibility provides added protection from vibration and small in-plane expansion or contraction movement making it ideal for elevator cabins and manufacturing plants
- Excellent resistance to humidity and wide temperature variations
- Ideal for installations subject to high heat (up to 250°C [482°F], such as fireplace surrounds
- Easy to spread and fast curing
- Remains flexible after curing
- Very low VOC with 100% solid content once cured



Packaging	Product Code
5.4 kg (11.90 lb) kit	00303
8.6 kg (18.96 lb) kit	00304



PRO GROUT™ XTREME MORTAR

PRO GROUT™ XTREME MORTAR is an innovative, new-generation, lightweight, unique ALL-IN-ONE reactive resin mortar and grout featuring FUSION technology, which blends multiple key characteristics for the benefit of the end-user. It is water-cleanable, high-performance and durable that outperforms common cementitious mortars and grouts.

- Use as an **INDUSTRIAL-STRENGTH MORTAR** for most tile and stone and moisture sensitive stones such as green or red marbles
- Use in areas subject to harsh and highly corrosive chemicals, such as in commercial and institutional kitchens, bottling and food processing plants, hospitals, laboratories, breweries and more
- Super lightweight – 33% lighter in weight than conventional epoxy products
- Contains Super Setting Technology™, which offers extended open time, ultra-creamy consistency and exceptional mortar transfer
- Contains Recycled Materials (50% Post-Consumer)
- Silica sand free
- Qualifies as part of PROMA's LIMITED WARRANTY PROGRAM up to a LIFETIME (contact PROMA for details)
- For INTERIOR and SUBMERGED applications
- Inhibits mold and mildew growth
- No VOC
- Exceeds ANSI A118.3 requirements



Packaging	Product Code
1 L (0.26 gal) kit	51XX1
3 L (0.79 gal) kit	51XX3



Packaging Reimagined.



PROMA now uses the most advanced plastic packaging available for most powder products.

- 100% recyclable
- Weather resistant
- Dust-free
- Double the shelf life

1. Color-coded with pictograms for easy product identification
2. Clear and easy graphic instructions
3. Trilingual – English, French and Spanish
4. **ADVANCED, SUPERIOR ANTI-SLIP SURFACE FEATURE – BAGS WILL NOT SLIDE WHEN STACKED!**
5. Easy to palletize



PROMA Adhesives Inc.

9801, Parkway, Anjou, Quebec Canada H1J 1P3

Tel.: 514.852.8585 • Fax: 514.852.8225

Toll-free: 1 866.51.PROMA (77662)

Email: info@proma.ca

© 2024 PROMA Adhesives, Inc.